

# Florence Nightingale Museum *Family Trail*



Find out about the life of Florence Nightingale through our trail around the Museum.

Use the map (left) to help find the objects and answers.

## 1 Young Florence

Florence Nightingale was born in 1820 in Florence, Italy. When she was young, she did lots of travelling and liked to collect things.

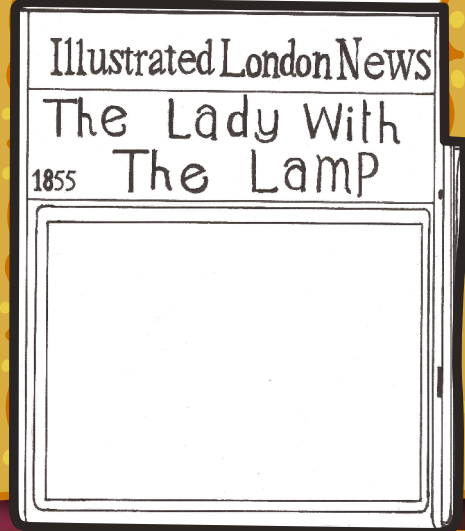
Find these objects in the green hedge and label where she found them on the map on the other side of this trail.



## 2 The Lady with the Lamp

Florence Nightingale became famous during the Crimean War for looking after the soldiers. A newspaper printed a picture of her visiting the soldiers with a lamp, but the picture had the wrong type of lamp (right!).

Can you find Florence's real lamp in the Museum and draw it?



## 3 Mary Seacole

Mary Seacole set up the 'British Hotel' as a general store, canteen and surgery during the Crimean War. She took care of soldiers with her remedies. Mary was so caring she became known as "Mother Seacole".



Where was Mary Seacole born?

## 4 Alexis Soyer, Victorian Chef

Alexis Soyer went to the Crimea to help improve the soldiers' diet, teach soldiers how to cook, organise the kitchens and write tastier recipes.



Circle which food you would include for a healthy diet:

Vegetables   Fruit   Sweets  
Meat   Chocolate   Rice

## 5 Flo the Campaigner

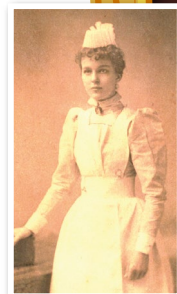
Florence Nightingale used writing as a way to gather support for her work, campaigning for the reform of nursing and for cleaner hospitals.



What would you campaign for?

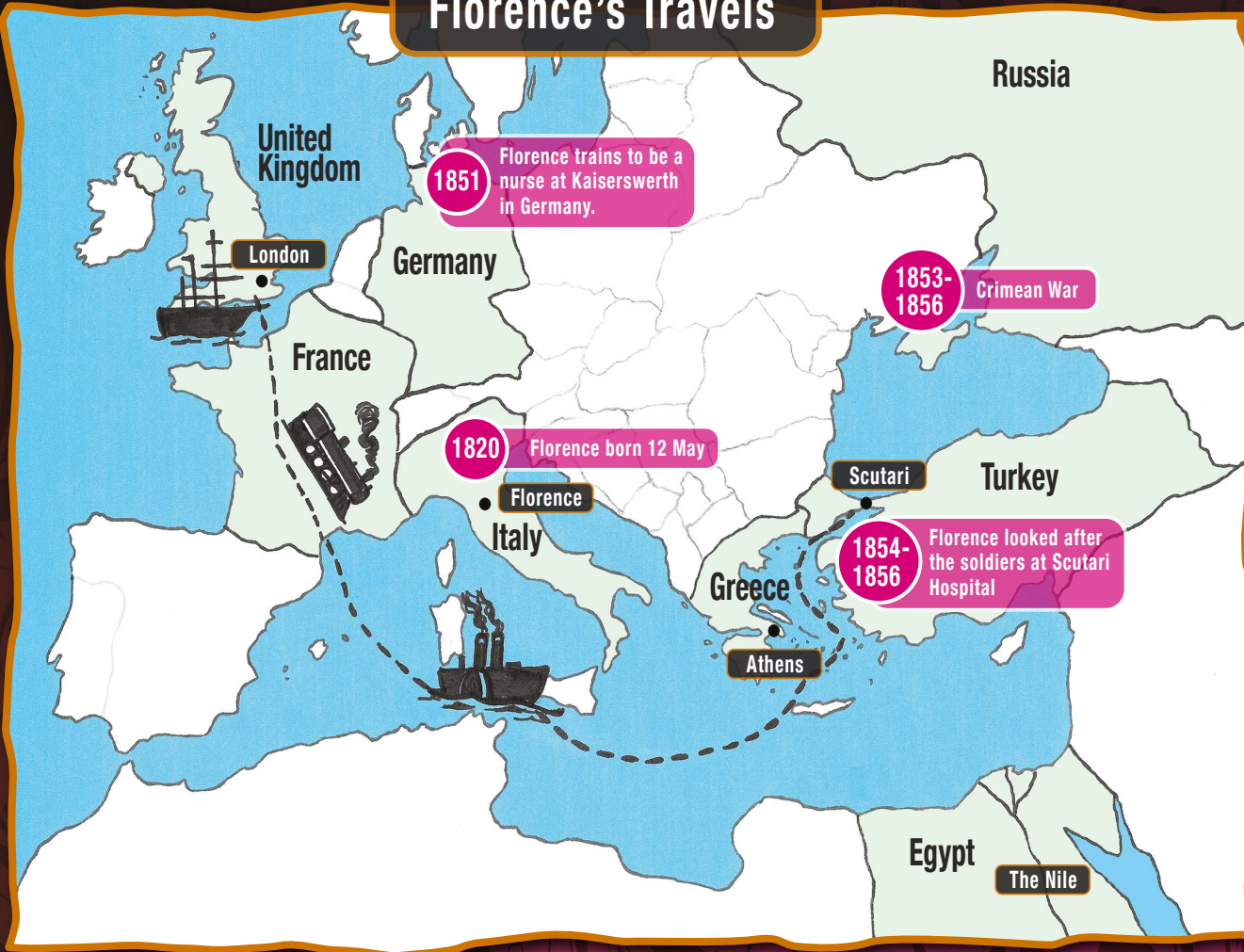
## 6 Nightingale Training School for Nurses

Florence Nightingale opened The Nightingale Training School for Nurses at St Thomas' Hospital in 1860. Can you find the nursing uniform worn by Helena Riddick, a Nightingale Nurse in 1896?





# Florence's Travels



# Nightingale Nurse

H	L	Z	U	O	D	F	Y	R	X
M	H	F	D	C	L	E	V	E	R
I	E	X	S	F	C	J	G	R	U
B	L	W	F	T	A	G	D	D	J
R	P	F	U	G	R	A	N	Y	X
A	F	J	E	N	I	O	J	N	D
V	U	T	P	R	N	K	N	J	K
E	L	T	R	F	G	G	I	G	Q
K	H	Y	W	V	N	Q	E	N	H
S	M	N	K	M	T	G	W	P	D

These are the words that describe a nurse.  
Can you find these words in the word search?

KIND CARING BRAVE HELPFUL STRONG CLEVER

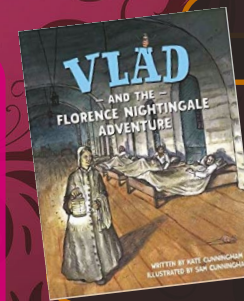
Are you studying Florence Nightingale at school? Why not show your teacher what you learned at the Florence Nightingale Museum. Or ask your school to book one of our popular Key Stage 1 workshops so that your whole class can meet Miss Nightingale.

It took Florence and her nurses 13 days to reach Scutari Hospital.  
How did Florence Nightingale and her nurses travel from France to Scutari?

Question 1 answers: Pressed flowers - United Kingdom; Head rest - The Nile; Egypt; Athena - Athens, Greece

Meet Miss Nightingale and Mary Seacole.

Visit our website to find out when they will be at the museum  
[www.florence-nightingale.co.uk](http://www.florence-nightingale.co.uk)



# Gift Shop

Don't forget to visit our gift shop and take home a souvenir of your visit, including Vlad and the Florence Nightingale Adventure, illustrated by Sam Cunningham.

Thank you to Sam Cunningham for the illustrations in this trail and in the family corner.

